



MEGALIFT

NEWSLETTER | VOLUME 7 | 2018



Megalift Sdn Bhd | Tel: +603 3375 2200-07 | Email: enquiries@megalift.com.my

Follow Us | www.facebook.com/Megalift | [Megalift Sdn Bhd](https://www.linkedin.com/company/megalift) | [@MegaliftMalaysia](https://www.instagram.com/MegaliftMalaysia)



Cargo: HP Reactor
Dimension: L22.30 m x W2.90 m x H3.15 m
Weight: 270 ton

We have recently embarked on Rapid Package 29 project, also known as Isononanol (INA) Plant in Pengerang, Johor which is expected to come on-stream by the second half of 2019.

Scope: Transport and barging



Cargo: Gas Compressor Unit
Dimension: L9.70 m x W4.90 m x H6.40 m
Weight: 44.15 ton



Cargo: Gas Compressor Unit
Dimension: L11.60 m x W5.80 m x H6.40 m
Weight: 67.00 ton





Picking up from manufacturer in Shanghai, China



Delivery from manufacturer to Shanghai port



Waiting to be loaded onto vessel in Shanghai port



Discharging from vessel and loaded for delivery



Unloading in Gemas train station

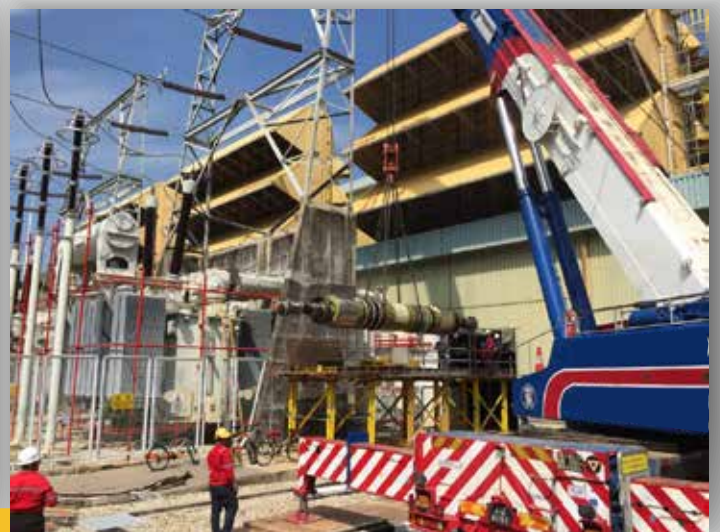
Scope: Transport from manufacturer's site to Shanghai port, freighting from Shanghai to Port Klang, and delivery to Gemas

Cargo: Wagon (40 units)
Dimension: L12.83 m x W2.63 m x H3.10 m
Weight: 22 ton each



Scope: Double banking in Port Klang, barging and transport to site
Cargo: Panel structures of various sizes, shapes and weights

Heavy Lifting in Lumut Power Plant



Scope: Heavy lifting
Cargo: Rotor
Dimension: L10.25 m x W1.20 m x H1.20 m
Weight: 41.50 ton



Scope: Transportation
Cargo: Storage Tank
Dimension: L32.00 m x W4.30 m x H4.46 m
Weight: 95 ton

Activities within the MTML Group



Fire Extinguisher Training

Thanks to Mr Ramesh, our Safety Officer, we had completed our 2018 fire extinguisher training for all our drivers. It's an annual exercise to keep everyone vigilant at all times.

Hiking Adventure

It's not the mountain we conquer but ourselves!

