



MEGALIFT

NEWSLETTER | VOLUME 21 | 2020



Follow Us



www.facebook.com/Megalift



Megalift Sdn Bhd



@MegaliftMalaysia



This was a highly critical job to shift two units of 31-m tall Mechanical Unloaders in Lumut Port located along the Straits of Melaka, Malaysia. Not only did it require engineering expertise, we would not have successfully executed without a team of experienced personnel.

While the traveling distance was not very far, the coastal setting posed a considerably high risk with strong and unpredictable winds. Given the height of the cargo, it was also challenging adjusting its centre of gravity. From jacking up the cargo, moving along the trajectory and jacking it down at its final position, we had to take intervals of pauses to ensure cargo stability and gushes of winds to pass.

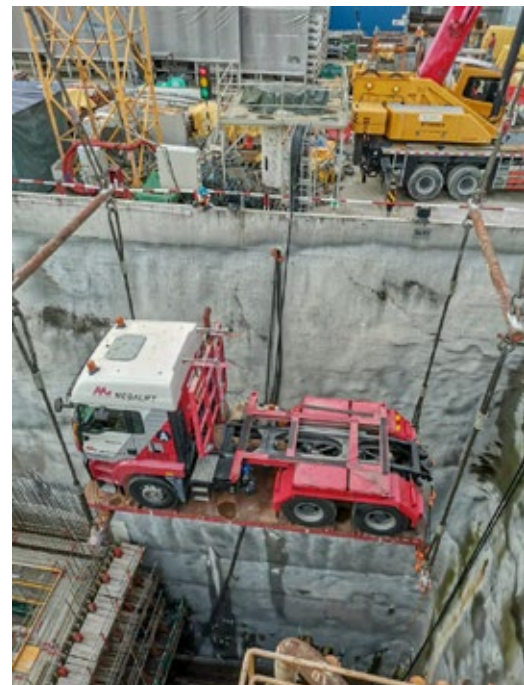
Cargo: Mechanical Unloader
Dimension: L12.00 m x W4.60 m x H31.00 m
Weight: 253 ton

Cargo: Pneumatic Bulk Crane
Dimension: L7.60 m x W4.60 m x H31.00 m
Weight: 135 ton



For many months we've been transporting tunnel boring machines (TBM) for the construction of Klang Valley MRT Phase 2. But the most recent jobs that we did for this project was rather different - Megalift was engaged to deliver some electrical and system equipment in to the respective stations via the tunnels.

To do that, our multi-axle trailers were hoisted down to the TBM launching shaft from ground level which was at a height of more than 20 meters. Our trailers were used to send transformers, switchgears and other electrical accessories in to the control rooms and station platforms.





We did the shuttling of a Pipe Rack in the Petronas's centralised utilities production plant in Gebeng. From the fabrication area, we transported the 7.50-m high Pipe Rack to the installation site using a 10 side-by-side multi-axle self-propelled trailer.

Cargo: Pipe Rack
Dimension: L20.50 m x W7.00 m x H7.50 m
Weight: 85 ton

Transport of Transformers to 40MW Solar Plant in Kedah



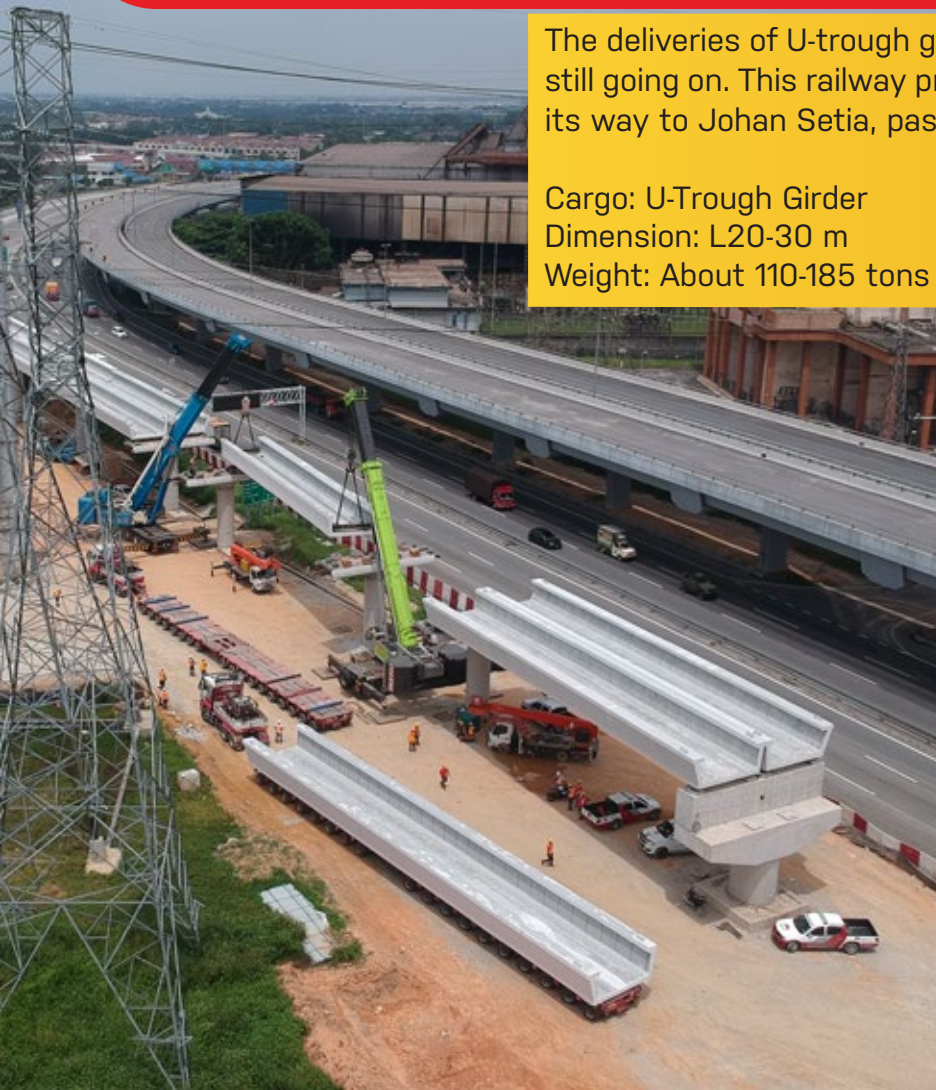
We transported one unit of 45 MVA Power Transformer along with its accessories from Port Klang to Kuala Muda, Kedah for a 40MW solar plant.

Cargo: Power Transformer
Dimension: L7.17 m x W2.53 m x H3.59 m
Weight: 64 ton



The deliveries of U-trough girders for the construction of LRT Line 3 are still going on. This railway project begins at Damansara and connects all its way to Johan Setia, passing by Klang town.

Cargo: U-Trough Girder
Dimension: L20-30 m
Weight: About 110-185 tons each



Machinery Installation for UK Company in Johor



A renowned British home appliances brand has set up a new research and manufacturing center in Johor Bahru and we're glad to contribute our expertise in their plant set-up. We have completed two rounds of machinery installations - to move, position and connect the production lines.

It's always great to see new investments in Malaysia as they are the catalyst to our nation's economic growth.

